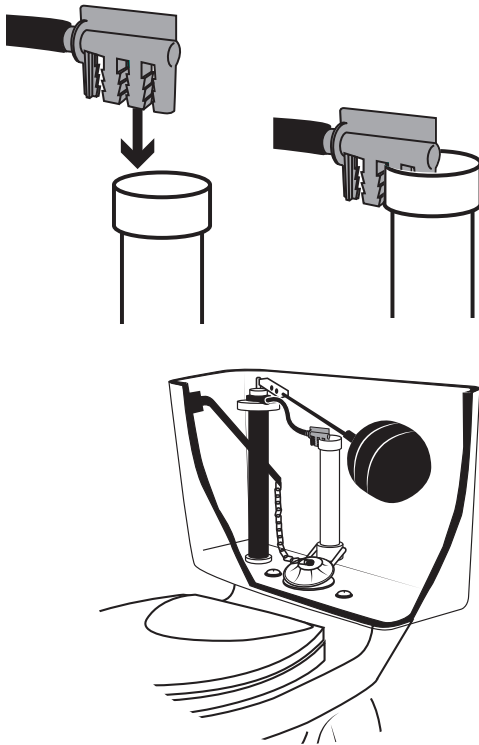


# Product Installation Instructions

## H<sub>2</sub>O Flow Diverter

### To complete installation you will need:

- H<sub>2</sub>O Flow Diverter (located in your kit)
- Knife or scissors (only needed if flex hose requires cutting)



### Instructions

#### INSTALL THE DIVERTER

1. Remove the clip or holder, if one is present, from the flexible hose at the overflow tube.
2. Pull the flexible hose out of the overflow tube.
3. Insert the H<sub>2</sub>O Flow Diverter into the free hose end.
4. Push the H<sub>2</sub>O Flow Diverter onto the overflow tube.

\*If the hose is kinked (too long), complete the following additional steps.

#### SHORTEN THE HOSE

5. Remove H<sub>2</sub>O Flow Diverter from the overflow tube.
6. Remove the H<sub>2</sub>O Flow Diverter from the hose end.
7. Cut the free hose end. Cut only enough to eliminate the kink.
8. Re-insert the H<sub>2</sub>O Flow Diverter into the free hose end.
9. Push the H<sub>2</sub>O Flow Diverter onto the overflow tube.

\* H<sub>2</sub>O Flow Diverter is adjustable. Stop all overflow water by placing the first of the four nozzles inside the overflow tube. Place two posts inside to limit overflow water waste or if the bowl does not fill to the proper level when flushed.